



1475 Buford Drive  
Suite 403-306  
Lawrenceville, GA 30043

Phone: 800-438-9309, access code 02  
Fax: 413-473-9841  
Email: [info@touchofnature.com](mailto:info@touchofnature.com)  
Web: [www.touchofnature.com](http://www.touchofnature.com)

[www.touchofnature.com](http://www.touchofnature.com) Touch of Nature, Inc

[www.touchofnature.com](http://www.touchofnature.com) Touch of Nature, Inc.

SPRING  
PLANTING  
CATALOG



SPRING CATALOG

**Specializing in:**

- Cannas, Daylilies and Hostas
- Top quality flowerbulbs & perennials
- 100% Guaranteed to Grow

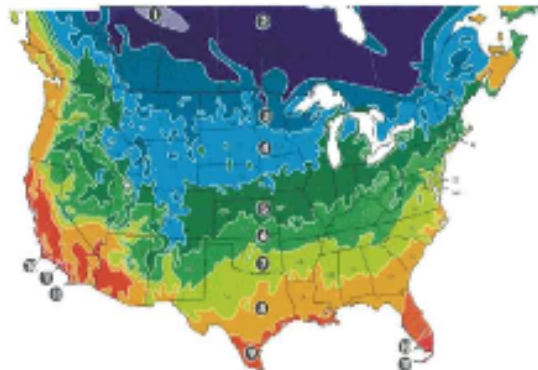
Hello Happy Gardeners!

Thank you for your interest in Touch of Nature, Inc.! We hope this catalog will become a valued resource for you both in guiding your Spring bulb planting as well as for purchasing your Spring flowerbulbs & perennials. We strive to offer you a top quality product at a competitive price together with a selection whereby everyone can find something that would mark a great addition to his or her garden. If you need quantities greater than those listed or for items of interest that are not listed in this catalog, please contact us and we will be happy to provide you with a quote! Also, feel free to contact our experts for any gardening questions you might have...we are here to serve you!

**Table of Contents**

Acidenthera	3	Crocospmia	6	Hostas	10
Agapanthus	3	Daylilies	7	Japanese Iris	9
Aztec Lilies	3	Elephant Ears	8	Liatris	11
Bushels of Bulbs	4	Fundraising Info	14	Lilies	11
Caladiums	5	Garden Amaryllis	8	Liriope	11
Callas	4	Garden Gifts	14	Lycoris	12
Cannas Dwarf	5	Ginger Lilies	8	Peruvian Daffodil	12
Cannas Regular	6	Gladiolus	9	Siberian Iris	13
Crinum	6	Glory Lilies	9	Tuberoses	13
		Zephyranthes	13		

**USDA Plant Hardiness Zones Map**

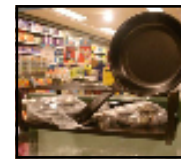


Zone	Avg Min Temp
1	Below -50 F
2	-50 to -40 F
3	-40 to -30 F
4	-30 to -20 F
5	-20 to -10 F
6	-10 to 0 F
7	0 to 10 F
8	10 to 20 F
9	20 to 30 F
10	30 to 40 F
11	Above 40 F

**To Order Call: 1-800-438-9309, access code 02**

**Garden Accessories & Gifts**

Unique and useful ideas to help you in the garden or to brighten someone's day.



**Gourmet Cooking Sets** \$26.00 each

One of our best selling items for entertaining outdoors with friends and family! All of us at Touch of Nature have a set and every time we have friends over to "Gourmet", they always want one when they leave. These also make PERFECT, unique gifts for your family and friends!

**Contents:**

- 1 Sturdy black metal base, with a solid bottom plate that has indentations to hold the burners.
- 2 Burners that use spiritus ie: liquid flame, Sterno cans
- 2 Non-stick frying pans with a diameter of 6 inches

**Replacement Burners**  
\$5.50 each

**Replacement Pans**  
\$6.50 each

**Wooden Spatulas**  
\$2.00 (set of 2)

**Short-handled bulb planter**  
\$2.75 each



**Forcing Vases (Thin Crystal)**  
\$4.00 each  
6 for \$21.00  
12 for \$36.00



**Square Green Vases**  
\$7.00 each



**Garden Aprons (Navy, Khaki, Royal)**  
\$16.00 each



**Fundraising with Flowerbulbs & Perennials**

*Touch of Nature offers an exciting and profitable fundraising program to organizations that are serious about raising money.*

Rewarding, Unique Product for Your Supporters

Earn up to 55% Profit  
Risk-Free

Easy to Sell

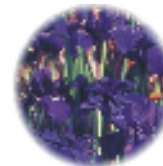
Free Brochures

No Money Up Front Required

Environmentally Friendly

Free Shipping for Orders Over 100 Packages

Our Flowerbulbs & Perennials are Guaranteed to Grow



Call our helpful staff today at 1-800-438-9309, access code 02 or email us at info@touchofnature.com to start earning money for your group!

**www.touchofnature.com Touch of Nature, Inc.**

**Siberian Iris**



Siberian Iris are an excellent plant for around the pond or in a moist area of the garden.

**Size:** #1 division **Plant:** 1 Bulb Per 2 Sq Ft **Zone:** 3-10  
**Bloom Time:** Summer - Fall **Exposure:** Sunny  
**Height:** 36-42" **Planting Depth:** Cover with 2" of soil

Caesar's Brother - Purple

Snow Queen - White

5 for \$10.75 ~ 10 for \$19.00 ~ 25 for \$41.25

**Tuberoses**



Tuberoses have sweetly scented white flowers with grass-like foliage. They are excellent as a cut flower or patio plant and perform best when lifted out of the ground and stored annually. Dig and store for winter in zones 3-8.

**Size:** varies **Plant:** 2 Bulbs Per Sq Ft **Zone:** 3-9  
**Bloom Time:** Late Summer **Exposure:** Sunny  
**Height:** 3-4' **Planting Depth:** 4-6"

The Pearl - Double flowers (Bulb Size: Clumps)

Mexican Single - Single flowers (Bulb Size: 7/8 cm)

5 for \$9.00 ~ 10 for \$16.00 ~ 25 for \$35.00

**Zephyranthes (Rain Lily)**



Zephyranthes have beautiful blooms that flourish after watered or after it rains. They perform well in pots where they are not hardy. Dig and store for winter in zones 3-8.

**Size:** 6/8 cm **Plant:** 5 Bulbs Per Sq Ft **Zone:** 3-10  
**Bloom Time:** Summer **Exposure:** Sunny / semi-sunny  
**Height:** varies **Planting Depth:** 2-3"

Candida - White, 6-8"  
 Robustus - Pink, 8-12"

Citrina - Yellow, 4-6"  
 Mixed - Mixture of white, pink & yellow

10 for \$5.00 ~ 25 for \$11.25 ~ 50 for \$20.00

▶ To Order Call: 1-800-438-9309, access code 02

**Acidenthera**



Stalks of fragrant white flowers with brown centers make this a unique addition to your garden. Dig and store for winter in zones 3-7.

**Size:** 8/10 cm **Plant:** 9 Bulbs Per Sq Ft  
**Bloom Time:** Summer **Planting Depth:** 4"  
**Height:** 26-30" **Zone:** 3-10 **Exposure:** Sunny

10 for \$5.00 ~ 25 for \$11.50 ~ 50 for \$21.50

**Agapanthus**



Agapanthus are clump-forming, evergreen perennials with strap-shaped leaves that bear trumpet shaped flowers. These are great border plants and also work well in containers.

**Size:** 2/3 eye plants **Plant:** 1 Bulb Per 1.5 Sq Ft  
**Planting Depth:** Cover with 3" of soil  
**Bloom Time:** Summer **Height:** 24-30"  
**Zone:** 9-10 **Exposure:** Sun / Part Shade

Africanus - Blue

Orientalis Albidus - White

3 for \$13.50 ~ 5 for \$20.00 ~ 15 for \$52.50

**Aztec Lilies (Sprekelia)**



Perfect for outdoors in mild climates or enjoy indoors as a pot plant in colder climates. Dig and store for winter in zones 3-9.

**Size:** 14/16 cm **Plant:** 2 Bulbs Per Sq Ft  
**Bloom Time:** Mid Spring **Planting Depth:** 4-6"  
**Height:** 8-12" **Zone:** 3-9 **Exposure:** Sunny

1 for \$5.50 ~ 3 for \$14.40 ~ 10 for \$52.50

**Bletilla Striata**



These easy to grow garden orchids have light green, iris-like foliage.

**Size:** 2-3 eyes **Plant:** 1 Bulb Per Sq Ft  
**Planting Depth:** Cover with 3" of soil  
**Bloom Time:** Summer **Height:** 10-12"  
**Zone:** 6-9 **Exposure:** Semi-sunny

3 for \$16.50 ~ 5 for \$24.00 ~ 15 for \$61.50

www.touchofnature.com Touch of Nature, Inc.



**Bushels of Bulbs**

An economical way to plant large areas of your landscape with naturalizing, perennializing or large-scale informal plantings. These bulbs are comprised of all sizes that will bloom reliably.

See individual items information throughout this catalog for exposure, zones & blooming times.

- Japanese Iris (D) - Rising Sun
- Siberian Iris (D) - Caesar's Brother
- Hosta (D) - Mixed, Royal Standard
- Liriope (C) - Spicata
- Gladiolus (B) - Mixed
- Asiatic Lily (E) - Mixed
- Cannas (A) - Mixed, Red, Pink, & Yellow
- Daylilies (D) - Mixed, Red, Pink, & Yellow
- Caladiums (E) - Mixed

	FULL BUSHEL	HALF BUSHEL
PRICE A	\$56.00	\$35.00
PRICE B	\$75.00	\$48.00
PRICE C	\$101.00	\$62.00
PRICE D	\$113.00	\$73.00
PRICE E	\$169.00	\$95.00

	Avg Qty per Full Bushel	Avg Qty per 1/2 Bushel	Coverage Full Bushel	Coverage 1/2 Bushel
Daylilies, Hostas	100	50	150 sq ft	75 sq ft
Iris (Sib & Jap)	100	50	150 sq ft	75 sq ft
Lilies	300	150	100 sq ft	50 sq ft
Liriope	100	50	100 sq ft	50 sq ft
Gladiolus/Caladiums	300	150	100 sq ft	50 sq ft
Cannas	125	60	250 sq ft	125 sq ft



**Callas**

Callas are excellent for cut flowers and also for pot or patio containers. Dig & store for winter in zones 3-8.

Size: 14/16 cm Plant: 1 Bulb Per 1.5 Sq Ft  
 Planting Depth: 3-4" Exposure: Sun / Part Shade  
 Bloom Time: Summer Height: 16-20" Zone: 3-10

- Albo Maculata - White
- Lavender Gem - Lavender
- Mixed - Mix of white, yellow and lavender
- Hybrid Yellow - Yellow
- Hybrid Pink - Rose pink

3 for \$16.20 ~ 5 for \$24.50 ~ 15 for \$66.00

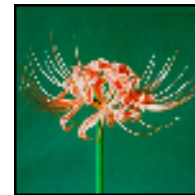


**Liriope Spicata (Creeping Lily Turf)**

This popular groundcover has evergreen grass-like leaves and will tolerate full sun. However, the best foliage color comes in partially shady conditions. The Spicata variety has green leaves with pale pink flowers.

Size: 3/5 eyes Plant: 1 Plant Per Sq Ft  
 Bloom Time: Summer-Fall Height: 8-12"  
 Zone: 6-9 Exposure: Sun/Part Shade  
 Planting Depth: Cover with 2" of soil

10 for \$16.50 ~ 25 for \$37.50 ~ 50 for \$67.50



**Lycoris**

Lycoris are grown for their showy umbels of tubular-funnel-shaped flowers with narrow, spreading, sometimes reflexed petal lobes, borne on leafless stems from spring to early autumn. In areas with hot summers, grow them in a sunny border or rock garden. Where summers are cool, they are best grown in containers in a cool greenhouse. Excellent perennializer. Dig and store for winter in zones 4-8.

Size: varies Plant: 3 Bulbs Per Sq Ft Zone: varies  
 Bloom Time: Late Summer Height: varies  
 Exposure: Sunny Planting Depth: 4-6"

**Radiata** 'Spider Lily' - Bright red flowers, Bulb size 10/12 cm, Ht 16-20", Zone 4-10  
 3 for \$5.40 ~ 5 for \$8.25 ~ 15 for \$22.50

**Squamigera** 'Magic Lily' or 'Resurrection Lily' - Large pink flowers, earliest blooms and great for cutting, Bulb size 12/14 cm, Ht 20-24", Zone 4-8  
 3 for \$10.50 ~ 5 for \$16.25 ~ 15 for \$45.00



**Peruvian Daffodil (Hymenocallis)**

Peruvian Daffodils are great as pot plants and contain 3-5 flowers per stem. Their lush green foliage remains attractive long after flowering. Dig and store for winter in zones 3-7.

Size: 14/16 cm Plant: 1 Bulb Per Sq Ft Zone: 3-10  
 Bloom Time: Late Spring Height: 12-15"  
 Exposure: Sunny Planting Depth: 4-6"

**Festalis Advance** - White 3 for \$8.10 ~ 5 for \$11.75 ~ 15 for \$30.00  
**Sulphur Queen** - Yellow 3 for \$9.75 ~ 5 for \$14.25 ~ 15 for \$36.75

▶ To Order Call: 1-800-438-9309, access code 02

www.touchofnature.com Touch of Nature, Inc.



**Japanese Iris Rising Sun (yellow)**

Japanese Iris are rugged plants that can be grown anywhere in the garden, including the water garden (keep rhizomes just above the water level).

**Size:** 3/5 eyes      **Plant:** 1 Rhizome Per 2 Sq Ft  
**Bloom Time:** Summer      **Height:** 36-40"  
**Planting Depth:** Cover with 2" of soil  
**Exposure:** Sunny/Part Shade      **Zone:** 4-9

5 for \$10.75 ~ 10 for \$19.00 ~ 25 for \$41.25



**Liatriis**

Liatriis has flowers that uniquely open from the top downward. They attract butterflies and the long-lasting blooms make excellent cut flowers

**Size:** 8-10 cm      **Plant:** 5 Bulbs Per Sq Ft  
**Bloom Time:** Mid Summer      **Height:** 30-36"  
**Planting Depth:** 5"      **Exposure:** Any      **Zone:** 4-9

**Spicata** - Rosy, purple flowers  
**Spicata Alba** - White flowers

10 for \$5.50 ~ 25 for \$11.75 ~ 50 for \$19.50



**Lilies**

These lilies are very popular to be used as cut flowers. The Asiatic varieties multiply readily and are excellent for naturalizing. The Oriental varieties perform well in pots as well as the garden.

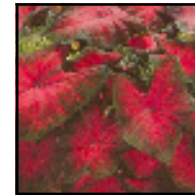
**Size:** 14/16 cm (Asiatics) and 16/18 cm (Orientals)  
**Plant:** 2 (Asiatics) & 3 (Orientals) Bulbs Per Sq Ft  
**Height:** 24-30" (Asiatics), 30-36" (Stargazer) and 40-44" (Siberia)  
**Planting Depth:** 4-6"      **Bloom Time:** Summer  
**Zone:** 3-9      **Exposure:** Sunny/semi-sunny

**Asiatics:** Orange Pink Red White Yellow Mixed  
**Oriental:** Stargazer - pink with white margin      **Siberia** - white

Asiatics: 5 for \$7.80 ~ 10 for \$13.60 ~ 25 for \$29.00  
 Oriental: 5 for \$11.00 ~ 10 for \$19.30 ~ 25 for \$41.50

For color pictures, weekly specials and 'tons' of information, visit us on the web at [www.touchofnature.com](http://www.touchofnature.com)!

To Order Call: 1-800-438-9309, access code 02



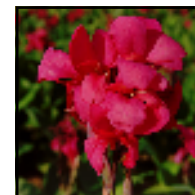
**Caladiums**

These fancy leafed caladiums are excellent as pot plants, for patio containers or as a border in the garden. Dig and store for winter in zones 3-10. Do not plant until after danger of frost has passed.

**Size:** Jumbo      **Exposure:** Shade      **Plant:** 2 Bulbs Per Sq Ft  
**Bloom Time:** Spring until frost      **Planting Depth:** 2-3"  
**Height:** 18-24"      **Zone:** 3-10      **Size Straps:** #1

**Candidum Jr. (B)** - White leaves with dark green veins; strap-leaf variety  
**Florida Elise (A)** - Pink with wide green margins and green mottling  
**Florida Fantasy (A)** - White leaves with green margin and dark red veins  
**Gingerland (B)** - Light green leaves with dark green border and splashes of cranberry; strap-leaf variety  
**June Bride (A)** - White with green edge  
**Miss Muffett (B)** - White with light green border & dark pink mottling; strap-leaf variety  
**Mixed (A)** - Mixture of red, pink and white varieties  
**Postman Joyner (A)** - Red leaves with deep green border

(A) 10 for \$13.00 ~ 25 for \$28.50 ~ 50 for \$49.00  
 (B) 10 for \$19.50 ~ 25 for \$48.75 ~ 50 for \$73.50



**Dwarf Cannas**

Dwarf cannas are excellent for pot or patio containers. Remove first dead flowers for new flowers that last until frost. Dig and store for winter in zones 3-7.

**Size:** 2/3 eyes      **Plant:** 1 Bulb Per 2 Sq Ft      **Zone:** 3-10  
**Bloom Time:** Summer -Fall      **Height:** 2-3'  
**Exposure:** Sunny      **Planting Depth:** Cover w/ 1" of soil

**Crimson Beauty** - Red flowers with green foliage, 3'  
**Pink Futurity** - Pink with bronze foliage, 2-3'  
**Red Futurity** - Red with bronze foliage, 2-3'  
**Striped Beauty** - Yellow flowers and foliage that is green w/white stripes  
**Tropical Sunrise** - Apricot pink flowers with green foliage, 2-3'  
**Yellow Futurity** - Light yellow flowers with forest green foliage, 2-3'

5 for \$7.50 ~ 10 for \$13.50 ~ 25 for \$28.75

[www.touchofnature.com](http://www.touchofnature.com) Touch of Nature, Inc.



**Regular Cannas**

Regular tall cannas are excellent for background border plantings. Remove first dead flowers for new flowers that last until frost. Dig and store for winter in zones 3-7.

**Size:** 2/3 eyes **Plant:** 1 Bulb Per 2 Sq Ft **Zone:** 3-10  
**Bloom Time:** Summer -Fall **Height:** 4-8'  
**Exposure:** Sunny **Planting Depth:** Cover w/ 1" of soil

- Firebird (A)** - Intense red with yellow eye and dark green foliage, 4-5'
- Miss Oklahoma (A)** - Medium pink flowers with green foliage, 4-5'
- Mixed (A)** - Mixture of listed varieties, 4-8'
- Orange Beauty (A)** - Large, bright orange flowers with yellow streaking and large, medium-green leaves, 6-8'
- Pretoria (B)** - Large orange blooms and yellow striped, broad leaves, 6-8'
- Red President (A)** - Bright red with green foliage, 3-4'
- Wyoming (A)** - Orange with green foliage with a bronze edge, 6-8'

(A) 5 for \$6.00 ~ 10 for \$10.50 ~ 25 for \$22.50  
 (B) 5 for \$7.50 ~ 10 for \$13.50 ~ 25 for \$28.75

**Crinum**



Crinum are excellent for the garden in warmer climates or for containers in colder areas. They produce large clusters of flowers on thick stems. Dig and store for winter in zones 3-7.

**Size:** 20/+ cm **Plant:** 1 Bulb Per 3 Sq Ft  
**Bloom Time:** Late Summer **Planting Depth:** 2"  
**Height:** 24-36" **Zone:** 3-9 **Exposure:** Sunny

- X Powellii** - Pink flowers blooming late summer
- Ellen Bosanquet** - Magenta bell-shaped flowers; lmted qty **\$24.50 each**
- Digweedii** - White star-shaped with light pink band; **\$24.50 each**
- Maiden's Blush** - Light blush pink; lmted qty **\$24.50 each**

1 for \$8.50 ~ 3 for \$22.50 ~ 5 for \$32.50

**Crococsmia**



Intense color and long lasting blooms make these a great perennial for your garden. They also make a good cut flower.

**Size:** 10/12 cm **Plant:** 5 Bulbs Per Sq Ft  
**Planting Depth:** 4" **Bloom Time:** Summer  
**Height:** 30" **Zone:** 4-10 **Exposure:** Any

- Emily McKenzie** - Orange flowers with rust-colored throat
- Lucifer** - Scarlet **George Davidson** - Yellow **Masonorum** - Orange
- Carmine Brilliant** - Bluish-red with purple and green leaves

10 for \$11.50 ~ 25 for \$25.00 ~ 50 for \$42.50

**To Order Call: 1-800-438-9309, access code 02**

**Hostas**



Hostas are very rewarding in the shady areas of your garden or when used as a border against the house or fence.

**Size:** #1 divisions **Exposure:** Shade **Zone:** 3-9  
**Plant:** 1 Root Per 2 Sq Ft **Bloom Time:** Summer -Frost  
**Planting Depth:** Cover with 2" of soil **Height:** varies

**Lakeside Zesty Zeno**

- Lakeside Zesty Zeno** - Elongated green leaves w/yellow margin; visible red petioles b/c upright growth; lav flowers, Ht 12-14" ~ \$8.00 ea
- Northern Exposure** - Huge, blue-green, round, heavily-corrugated leaves with wide irregular yellow margins; nearly white flowers, **pest-resistant**, and **prominent veins**, Ht 30-36" ~ \$6.50 ea
- Oh Cindy** - Thick dark green round leaves with wide gold border which changes to creamy white during the growing season; white flowers, Ht 16-18" ~ \$7.50 ea
- Old Glory** - Heart-shaped leaves with golden yellow center and irregular wide dark-green margins; It lavender flowers, Ht 18-20" ~ \$8.50 ea



Oh Cindy



Olive Branch



Praying Hands



Roller Coaster Ride

- Olive Branch** - Heart-shaped yellow leaves w/wide olive margins; white flowers; sport of Hosta Candy Hearts, Ht 12-14" ~ \$11.00 ea
- On Stage** - Two-tone, irregular green margins with gold centers; lavender flowers; reverse variegated foliage in which the center changes to cream or chartreuse depending on the amount of shade or sun it receives, Ht 28-39" ~ \$10.50 ea
- Praying Hands** - Folded, dark green crinkled leaves with a narrow cream margin; resembles a group of hands folded in prayer; lavender flowers, Ht 12-14" ~ \$5.00 ea
- Roller Coaster Ride** - Sport of Ray of Hope; small green wavy leaves with a thin white margin; purple flowers, Ht 10-12" ~ \$6.00 ea
- Stained Glass** - Shiny gold leaves with wide, dark green margin; prominent veins gives the effect of a stained glass window; **fragrant**, pale lavender flowers, **sun tolerant**, Ht 18-20" ~ \$6.00 ea
- Summer Music** - Pure white centers and irregular medium green margins; yellow-gold coloring between the white center and green margins; lavender flowers and **tolerates morning sun**; good for mass planting, Ht 20-22" ~ \$8.00 ea
- Sun Power** - Oval to heart-shaped yellowish green leaves; pale lavender to white flowers, Ht 18-24" ~ \$5.00 ea

**www.touchofnature.com Touch of Nature, Inc.**

**Hostas**



Hostas are very rewarding in the shady areas of your garden or when used as a border against the house or fence.

**Size:** #1 divisions    **Exposure:** Shade    **Zone:** 3-9  
**Plant:** 1 Root Per 2 Sq Ft    **Bloom Time:** Summer -Frost  
**Planting Depth:** Cover with 2" of soil    **Height:** varies

Lakeside Cha Cha

**Chantilly Lace** - Small hosta with long, narrow medium grey-green leaves with creamy white margin; white flowers. Ht 8-10" ~ \$7.00 ea

**Color Glory** - Large, round puckered leaves with irregular blue-green margin and creamy gold to yellow center; white flowers, **slug-resistant** and **sun-tolerant**. Ht 20-32" ~ \$6.00 ea

**Dream Queen** - Large, nearly rounded, corrugated bluish-green leaves with a narrow creamy white to yellow center; white flowers, **slug-resistant** and **sun-tolerant**. Ht 16-20" ~ \$5.50 ea

**Earth Angel** - Large, oval-shaped, pointed, blue-green leaves with a wide creamy white border. Mound like growth and pale lavender flowers. White-edged sport of Blue Angel; Hosta of the Year 2009, Ht 16-20" ~ \$5.50 ea

**Frozen Margarita** - Large, very shiny gold leaves with thin white margins; light lavender, fragrant flowers; Ht 18-24" ~ \$6.50 ea

**Gypsy Rose** - Creamy white to yellow center with a dark regular green margin; lavender flowers, Ht 14-16" ~ \$12.00 ea



Color Glory



Frozen Margarita



Gypsy Rose



Lakeside Dragonfly

**Lakeside Cha Cha** - Large, upright clump of medium-sized, lime green leaves with white borders; orchid flowers and **stunning in the shade**, Ht 16-18" ~ \$4.00 ea

**Lakeside Cup Cake** - Cupped, nearly round leaves w/ wide blue-green border & creamy white center; pale, lav flowers, Ht 12-14" ~ \$8.50 ea

**Lakeside Dimpled Darling** - Small, oval-shaped shiny green leaves with white margins; unique dimples on leaves; white flowers, **fast grower**, Ht 4-6" ~ \$6.00 ea

**Lakeside Dragonfly** - Medium blue-green foliage with wide irregular white margins; slightly shiny leaves are lightly folded and lance-shaped arching outward in a low cascading mound; pale lavender flowers, Ht 14-18" ~ \$7.50 ea

**Lakeside Looking Glass** - Shiny dark green ruffled leaves turning lighter green toward the veins; lavender flowers, Ht 18-20" ~ \$7.00 ea

**To Order Call: 1-800-438-9309, access code 02**

**Daylilies (Hemerocallis)**



Daylilies can be planted in any type of soil and are considered a 'fool-proof' plant. Grow them in a mixed or herbaceous border or in a wild garden. They are very versatile and durable

**Size:** #1 division    **Plant:** 1 Root Per Sq Ft    **Zone:** 3-9  
**Bloom Time & Height** are listed by individual variety  
**Exposure:** Sunny    **Planting Depth:** Cover w/ 3" of soil

**Aztec Gold (A)** - Bright golden yellow flowers; **flowers 3 times**; ht 16", late

**Bengaleer (A)** - Large gold with white midribs & edge; ht 30", mid

**Bonanza (A)** - Golden yellow with red halo; ht 30", early to mid

**Breathless Beauty (B)** - Maroon petals w/chartreuse throat; ht 40", mid

**Buttered Popcorn (B)** - Golden yellow blooms; **repeat bloomer**, ht 30", mid

**Catherine Woodbury (B)** - Lilac ink flowers with greenish-yellow throat; ht 26", mid

**Chicago Apache (B)** - Scarlet red with ruffled edge; ht 26", early

**Erin Prairie (B)** - Bright yellow w/green throat; 6.5" blooms; ht 27", early

**Frans Hals (A)** - Maroon and bright orange bicolor; ht 26", late

**George Caleb Bingham (B)** - Rose pink with light pink midrib, ht 26", mid

**Grape Magic (B)** - Purple w/dk prpl center & yellow throat; ht 26", early

**Hyperion (B)** - Lemon yellow 5 1/2" flowers; **fragrant**, ht 36", mid to late

**Ice Carnival (B)** - Best white daylily; strong variety that establishes quickly; ht 36", mid

**Kwanso (B)** - Large double tangerine-orange blooms with rusty-red highlights; ht 32", mid

**Mary Todd (B)** - 4-6" softly ruffled, bright yellow blooms; ht 26", early

**Mauna Loa (B)** - Bright orange flowers; ht 40", mid

**Purple Waters (A)** - Spider type with long purple petals; repeat bloomer, ht 30", mid

**Rose Red (B)** - Rose petals with red center; ht 26", mid

**Siloam Plum Tree (B)** - Maroon with green throat; ht 26", early

**Siloam Rainbow Magic (B)** - Creamy apricot blend 5" flowers with green throat; ht 22", mid

**Stella d'Oro (B)** - Small, golden yellow flowers; **repeat bloomer and great for containers**; ht 14", mid

**Yellowstone (A)** - Citrus yellow blooms, ht 36", mid

**Estate Mixture (B)** - A wide range of shapes, sizes and colors



	Per 5	Per 10	Per 25
(A)	\$10.75	\$19.50	\$42.50
(B)	\$15.00	\$28.00	\$65.00



### Elephant Ears

Elephant ears produce stems with abundant green leaves making them excellent for use in back borders. They tolerate moist, shady places very well. Dig and store for winter in zones 3-8.

**Size:** varies **Plant:** 1 Bulb Per 3 Sq Ft **Zone:** 3-10  
**Bloom Time:** Summer-Frost **Height:** varies  
**Exposure:** Sunny **Planting Depth:** Cover w/ 2" of soil

**Colocasia Esculenta** - Common elephant ear, Bulb size 1 1/13", 5-6'  
 3 for \$9.60 ~ 10 for \$28.50 ~ 15 for \$37.50

**Alocasia Macrorrhiza** - Upright elephant ear, Bulb size 7-9", ht 4-5'  
 3 for \$25.50 ~ 10 for \$75.00 ~ 15 for \$97.50

**Colocasia Esculenta 'Black Magic'**-Solid purple-black leaves, 5" pots, ht 3-4'  
 3 for \$42.00 ~ 10 for \$125.00 ~ 15 for \$165.00



### Garden Amaryllis

Large showy, funnel-shaped flowers borne on leafless stems from spring to autumn. They can be started indoors in pots in early spring and then transplanted outside after danger of frost has passed. Dig and store for winter in zones 3-8.

**Size:** varies **Plant:** 1 Bulb Per 2 Sq Ft **Zone:** 3-10  
**Bloom Time:** varies **Height:** 20-24" **Exposure:** Sunny  
**Planting Depth:** Plant w/neck of bulb just above soil

**Amarcrinum (A)** - Umbels of up to 6 white to light pink flowers with curved, mid-green leaves, blooms spring until frost; Bulb Size: 20/+ cm

**Hippeastrelia (A)** - Red flowers that are an intergenetic cross between Hippeastrum and Sprekelia (Aztec Lilies), blooms late spring; Bulb Size 18/+ cm

**Red Lion (B)** - Red flowers 4-6 inches across; classic Christmas amaryllis in a size that works great in the garden; Bulb Size 34/36 cm

**Apple Blossom (B)** - White flowers with pink stripes 4-6 inches across; classic Christmas amaryllis in a size that works great in the garden; Bulb Size 34/36 cm

**Lady Jane (B)** - Double salmon-pink flowers 4-6 inches across; classic Christmas amaryllis in a size that works great in the garden; Bulb Size 34/36 cm

**Minerva (B)** - Red flowers with white throat 4-6 inches across; classic Christmas amaryllis in a size that works great in the garden; Bulb Size 34/36 cm

(A) 1 for \$8.50 ~ 3 for \$22.50 ~ 5 for \$32.50  
 (B) 1 for \$5.50 ~ 3 for \$14.55 ~ 5 for \$22.00

### Ginger Lilies (hedychium spp.)

These tolerate very moist soil and are loved by both hummingbirds and butterflies.



**Size:** 2/3 eyes **Plant:** 1 Bulb Per 3 Sq Ft  
**Bloom Time:** Summer-Fall **Zone:** 9-11  
**Planting Depth:** Cover with 3" of soil  
**Height:** up to 84" **Exposure:** Sunny/Part Shade

**Gardneranum Kahili Ginger** - Orange flowers; not as fragrant as Coronarium

**Coronarium Ginger Lily** - White flowers with a gardenia-like fragrance

3 for \$9.00 ~ 10 for \$27.00 ~ 25 for \$56.25

### Gladiolus

Gladiolus are excellent for cut flowers. You can enjoy their blooms in 80-100 days after planting and all summer long by planting bulbs in two-week intervals. Dig and store for winter in zones 3-7.



**Size:** 14/16 cm **Plant:** 5 Bulbs Per Sq Ft  
**Planting Depth:** 3-4" **Bloom Time:** Summer-Fall  
**Height:** 3-4' **Zone:** 3-10 **Exposure:** Sunny

Lavender Orange Pink Purple  
 Red White Yellow Mixed

By color: 10 for \$5.50 ~ 25 for \$12.50 ~ 50 for \$22.50

### Glory Lily (Gloriosa)

These are stunning on a fence or in hanging basket containers. Dig and store for winter in zones 4-9.



**Size:** Topsize tubers **Plant:** 1 Tuber Per 3 Sq Ft  
**Planting Depth:** Cover with 3" of soil  
**Bloom Time:** Summer **Height:** up to 60"  
**Zone:** 4-9 **Exposure:** Sun / Part Shade

**Rothschildiana** - Golden yellow with red tips  
**superba Lutea** - Yellow

3 for \$8.70 ~ 5 for \$13.00 ~ 15 for \$34.50

**To Order Call: 1-800-438-9309, access code 02**

**www.touchofnature.com Touch of Nature, Inc.**